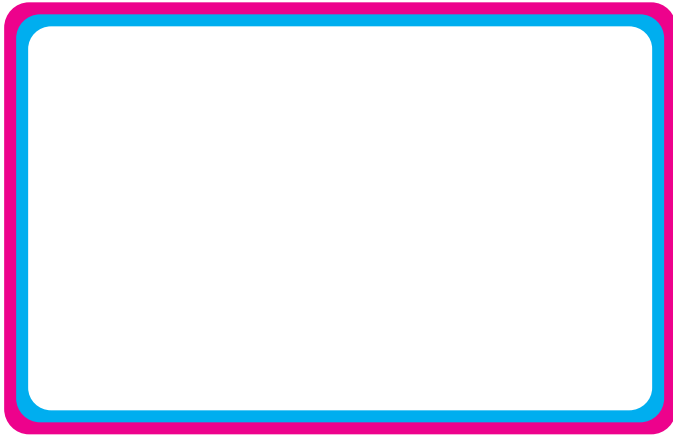


CR-80 Card



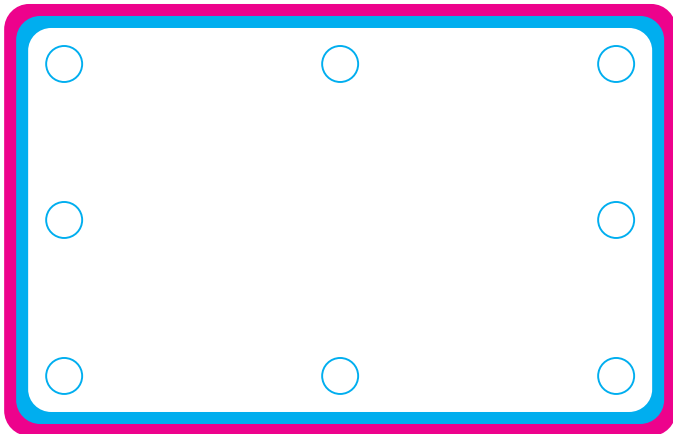
CR-80 CARD



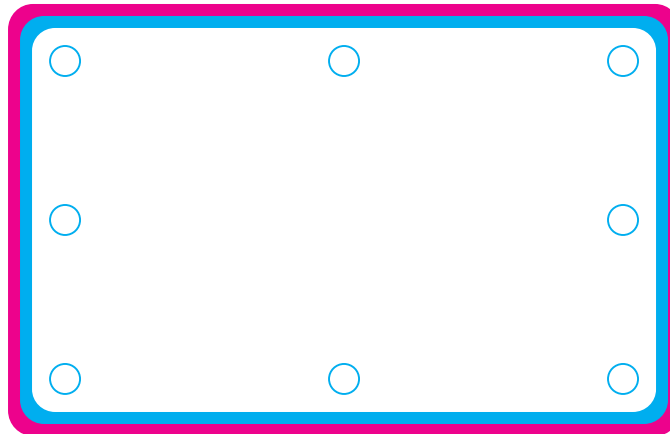
WITH 3-TRACK FLUSH MAG STRIPE
 $\frac{1}{2}$ " (.5") HEIGHT
 $\frac{3}{16}$ " (.1875") DISTANCE FROM EDGE



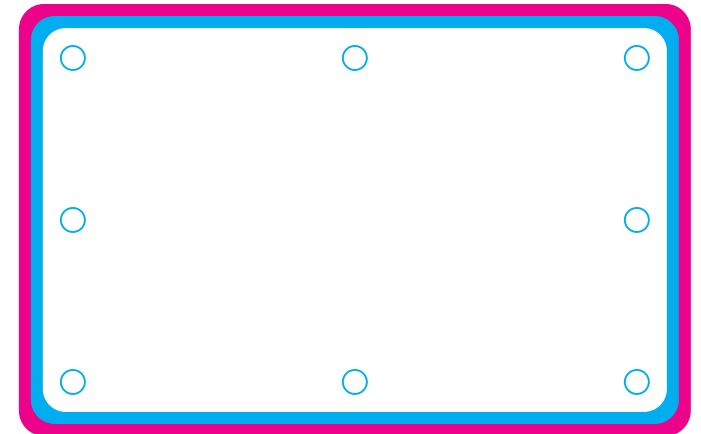
WITH 2-TRACK FLUSH MAG STRIPE
 $\frac{33}{100}$ " (.33") HEIGHT
 $\frac{3}{16}$ " (.1875") DISTANCE FROM EDGE



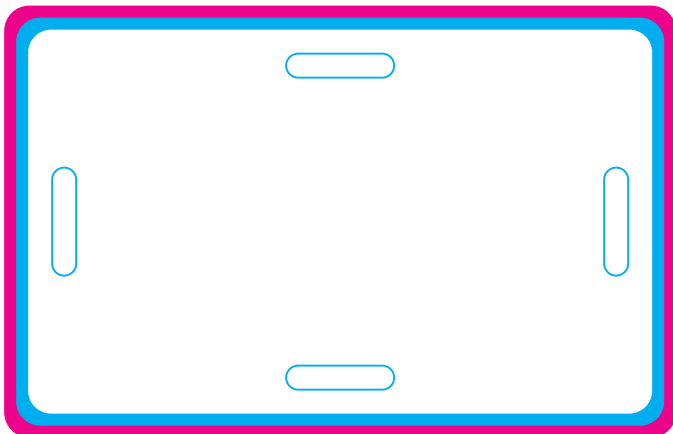
WITH $\frac{3}{16}$ " HOLE (STANDARD POSITIONS)
 $\frac{5}{32}$ " (.1563") DISTANCE FROM EDGE



WITH $\frac{5}{32}$ " HOLE (STANDARD POSITIONS)
 $\frac{5}{32}$ " (.1563") DISTANCE FROM EDGE



WITH $\frac{1}{8}$ " HOLE (STANDARD POSITIONS)
 $\frac{5}{32}$ " (.1563") DISTANCE FROM EDGE



WITH SLOT (STANDARD POSITIONS)
 $\frac{1}{8}$ " (.125") x $\frac{9}{16}$ " (.5625")
 $\frac{3}{16}$ " (.1875") DISTANCE FROM EDGE

CR-80 CARD
 $3 \frac{3}{8}$ " (3.375") X $2 \frac{1}{8}$ " (2.125")

 = **Bleed area.**

Provide at least $\frac{1}{16}$ " on each side for color or image that extends beyond the card edge.

 = **Text and logo safe area.**

Provide at least $\frac{1}{16}$ " distance away from the card edge to ensure that text and logo do not get cut off during die cutting.

 = **Final card size.**